



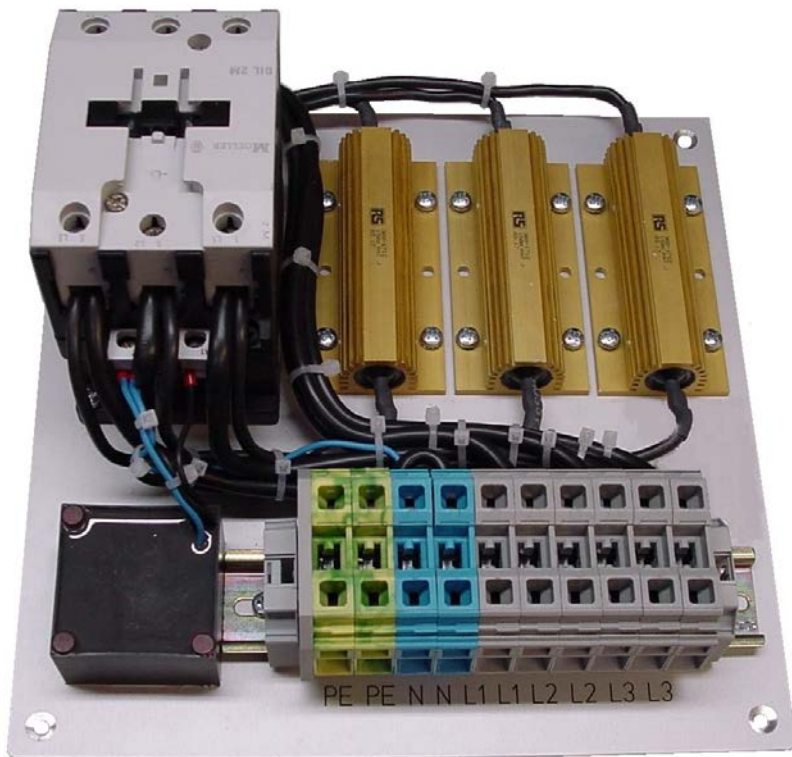
User's Manual

Current limiter
MODELS PIL 25-125
Vers. 1.0 – 09/17



Please read this manual completely before commissioning the device.

www.beteso.com



e.g.

Applies to the following devices

PIL25-15-M-N | PIL25-15-M-oN | PIL25-15-G-N | PIL25-15-G-oN | PIL25-15-M-N-1PH
 PIL32-35-M-N | PIL32-35-M-oN | PIL32-35-G-N | PIL32-35-G-oN
 PIL63-M-N | PIL63-M-oN | PIL63-G-N | PIL-63G-oN | PIL63-M-N-1PH | PIL63-M-oN-1PH
 PIL90-M-N | PIL90-M-oN | PIL90-G-N | PIL-90G-oN
 PIL125-M-N | PIL125-M-oN

Dear customer,

we would like to take this opportunity to thank you for buying this product from Bürger Electronic GmbH.

Please read the operating instructions carefully and keep them for future reference.

Scope of delivery:

- Device PIL25-125
- Including Test-report

Before use	Page
Front page	2
Explanation of symbols	4
Safety regulations	5
Material contents	6
Disposal	6
Legal Notices	6
Warranty card	7
Declaration of Conformity	8
Requirements for Input Power	9
Output Power connection	9
Intended Use	9
Schematic diagrams PIL models	10
Technical data	11
Basic Size for installation	12
Notes	13



The product is CE compliant and meets the requirements of the current European and national guidelines.



An exclamation mark in a triangle indicates important information contained in these operating instructions that must be observed by all means. To avoid injury, death of personal, or damage to the instrument, the operator must refer to an explanation in the instruction manual.



Terminal for the internal protective earth conductor; this screw/contact must not be unscrewed. The Devices have the protection class 1.



Danger, high voltage



Electronic products are recyclable material and do not belong in the household waste. Dispose of an unserviceable product in accordance with the relevant statutory regulations.



High Temperature. Do not cover the ventilation slots. Danger of overheating and fire!



Note



Live parts can be revealed if covers are opened or parts removed, except when it is possible to do this manually. Connector components can also be live.

If it is necessary to open the device for adjustment purposes or for maintenance or repairs, the device must be disconnected from all power sources.

If following this, adjustment, maintenance or repair have to be carried out when the device is open and live, the work may only be carried out by a specialist who is aware of the risks involved.

It must be ensured that only fuses of the specified type and rating are used as replacements. Only original spare parts may be used.

If it can be assumed that it is no longer possible to operate the device without danger, it must be decommissioned and secured against unauthorized or unintentional use.

Please contact Bürger Electronic if it is necessary to make a repair.

In case of transportation damage, please note:

Check the consignment immediately for damage and completeness! Make sure that no parts remain in the packaging and are lost as a consequence.

Have any damage to the goods or packaging confirmed on the waybill or delivery note by the carrier immediately (rail, post, haulage company etc.).

If damage is only discovered when the parts are unpacked, leave the goods in the condition in which they were when the damage was discovered. Make a complaint immediately to the postal service, rail freight or road haulage company and ask for the damage to be assessed.

The assessment must take place:

- Within 24 hours for the postal service,
- Within 7 days for rail freight,
- Within 4 days in the case of haulage companies which carry out final delivery of rail freight,
- Within 6 days in the case of vehicle transport carried out by freight carriers or haulage contractors.

Please retain all the packaging material in order to record the damage and have the following at hand:

1. Transportation documents, such as waybill, copy of express freight card or similar
2. Certificate of damage of the transportation company

As the consignee, you are entitled to compensation for damage which occurs during transportation, therefore you should make the application yourself.


Part name	Hazardous Substances					
	<i>Pb</i>	<i>Hg</i>	<i>Cd</i>	<i>Cr⁶⁺</i>	<i>PBB</i>	<i>PBD</i>
PCBA	o	o	o	o	o	o
Chassis	o	o	o	o	o	o
Accessories	o	o	o	o	o	o
Package	o	o	o	o	o	o

[o] indicates that the level of the specified chemical substance is less than the threshold level specified in the standards of SJ/T-11363-2006 and EU 2005/618/EC.
[x] indicates that the level of the specified chemical substance exceeds the threshold level specified in the standards of SJ/T-11363-2006 and EU 2005/618/EC.

Disposal

Do not dispose of electrical appliances as unsorted municipal waste, use separate collection facilities. Contact your local government for information regarding the collection systems available. If electrical appliances are disposed of in landfills or dumps, Hazardous substances can leak into the groundwater and get into the food chain, damaging your health and well-being. When replacing old appliances with new one, the retailer is legally obligated to take back your old appliances for disposal at least for free of charge.

Battery:
Pb = Battery includes lead
Cd = Battery includes cadmium
Hg = Battery includes quicksilver
Li = Battery includes lithium



Legal Notices

The information in this document is subject to change without notice.

Bürger Electronic GmbH makes no warranty of any kind with regard to this manual, including, but not limited to, the implied warranties of merchantability and fitness for a particular purpose.

Bürger Electronic GmbH shall not be held liable for errors contained herein or direct, indirect, special, incidental or consequential damages in connection with the furnishing, performance or use of this material

Bürger Electronic GmbH
Hölzlestr. 3
72768 Reutlingen
Germany
Telefon: +49 7121 97700
Fax: +49 7121 9770 11
Website: www.beteso.com
Mail: mailto@beteso.com

Copyright Notices. All rights reserved. Reproduction, adaptation or translation of this document without prior written permission is prohibited, except as allowed under the copyright laws.

We offer the legally-specified guarantee on the device supplied for us. The official starting date for the guarantee period is the date of invoice. However, the guarantee does not apply in case of accident, negligence, improper use, non-observance of the operating conditions, non-observance of the operating, test and service instructions or if repairs are made without the authorization of Bürger Electronic or if the device is used in a manner which is not approved by Bürger Electronic.

Bürger Electronic shall not be liable for indirect damage and reserves the right to decide on the suitability of rework or exchange of the device.

Please retain the invoice and guarantee card!

If any defects occur before or after the end of the guarantee period, please send the device to us.

- Send devices in suitable packaging, in the case of heavy devices, please send in double packaging.
- Enclose the invoice and a copy of the delivery note.
- Enclose the guarantee card, completely filled in. (Device Identification Card at the end of the document)
- Please describe the defect precisely.
- Please describe the defect precisely.

DIC – Device Identifikation Card

Device:	Type of device:
Date of purchase:	Invoice-No.:
Name, first name:	
Street:	
Postcode and location:	
Telephone:	
Description of defect:	

Repair under warranty

repair with costs:
 Repair up to €.....
 Above this amount, please send an estimate

CE Declaration of Conformity

*EG-Konformitätserklärung
Déclaration CE de Conformité*

We declare under sole responsibility that the product listed below

*Wir erklären in alleiniger Verantwortung, dass das unten aufgeführte Produkt
Nous déclarons sous notre propre responsabilité que le dispositif*

Product description, Code,
Type, Model

*Produktbezeichnung; Code, Typ, Modell
Nom, code, type, modèle*

manufactured by:

*hergestellt durch:
fabriqué par:*

Current limiter

*PIL25-15-M-N | PIL25-15-M-oN | PIL25-15-G-N | PIL25-15-G-oN
PIL25-15-M-N-1PH
PIL32-35-M-N | PIL32-35-M-oN | PIL32-35-G-N | PIL32-35-G-oN
PIL63-M-N | PIL63-M-oN | PIL63-G-N | PIL-63G-oN
PIL90-M-N | PIL90-M-oN | PIL90-G-N | PIL-90G-oN
PIL125-M-N | PIL125-M-oN*

Bürger Electronic GmbH
Hölzlestr. 3
72768 Reutlingen
Germany

meets all the provisions of the following terms

*allen Anforderungen folgender Richtlinien entspricht, die anwendbar sind.
Satisfait à toutes les dispositions des termes suivants*

EG Directives:

Low-voltage Directive	2014/35/EU - EN 60335-1:2012
EMC Directive	2014/30/EU - EN 61000-6-1:2007; EN 61000-6-3:2007 + A1:2011 EN 61000-3-2: 2014; EN 61000-3-3:2013
RoHS Directive	2011/65/EU

Place and date of issue:

*Ort und Datum der Erstellung:
Place et date de délivrance:*

Reutlingen, 05.09.2016

*Reutlingen, 7th of September 2016
Reutlingen, le 7 de septembre 2016*

Managing Director

*Geschäftsführer
Le Directeur des Opérations*



Fredrik Ljungman [CEO]

At the beginning, the device must be connected with an appropriate AC line Input. It should be used in an area where the ambient temperature does not exceed 70°C.

All PIL devices have one of the following connectors.



Wago terminal in different sizes at DIN rail mounting

329-433 VLL, 5 wires (3PH, N, PE)

Input frequency: 50/60 Hz

Wago terminal in different sizes at DIN rail mounting

329-433 VLL, 4 wires (3PH, PE, without neutral conductor)

Input frequency: 50/60 Hz

The device will be damaged if it is operated at an input voltage and current (generally the power) outside the configured range!

Please ensure that the connection is protected by a circuit breaker suitable for the connection type!

To protect the operators, the earth ground must be connected. Under no circumstances the PIL devices has to be operated without an adequate ground connection!

Output Power connection

The output connection is the same as the input connection with Wago terminal at DIN rail mounting in different sizes (dependent on the power class)

Please make sure that you provide and use the approximate supply cables.

Intended use

The inrush current limiters minimize currents of large electrical consumers at the time of switching on and thus prevent the failure of an on-site fuse.

Some transformers or motors are not connected to the mains due to the high inrush current.

The inrush current limiters of the PIL series work according to the following principle:

The limiter is switched between the switch-on and the load.

When switched on, the current is supplied via series resistors for the first approx. 300ms and limited. After this time, the current limiting resistors are short-circuited with a contactor.

In some cases, longer delays are required. This requires an additional time module.

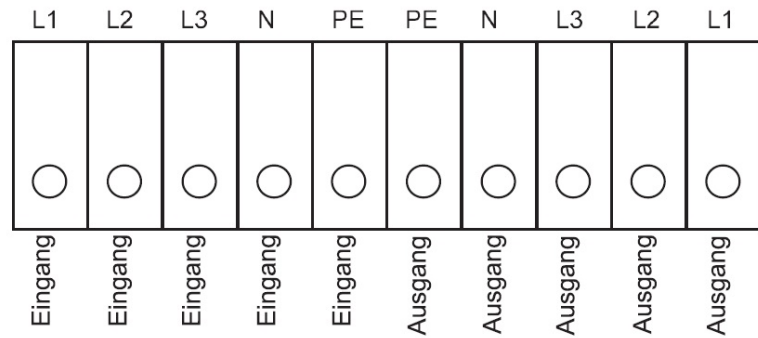
The larger the time delay, the larger the time delay Series resistors.

This requires an exact coordination with the consumer. The Standard devices are mounted on a mounting plate.

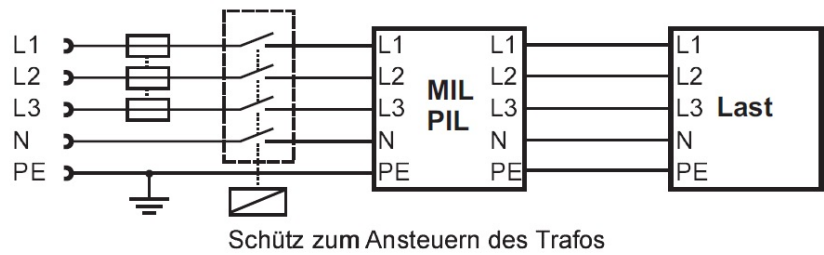
A matching housing is available as an option.

With neutral conductor

PIL25-15-M-N | PIL25-15-G-N
 PIL32-35-M-N | PIL32-35-G-N
 PIL63-M-N | PIL63-G-N
 PIL90-M-N | PIL90-G-N
 PIL125-M-N



3x400V AC/50 - 60 Hz



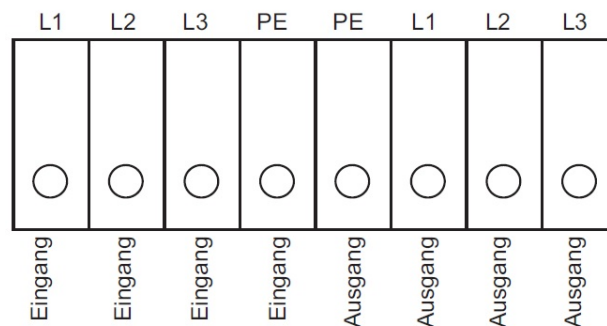
Please note: The individual connections are marked on the mounting plate and may differ from this view.

Please follow this connection diagram at the mounting plate.

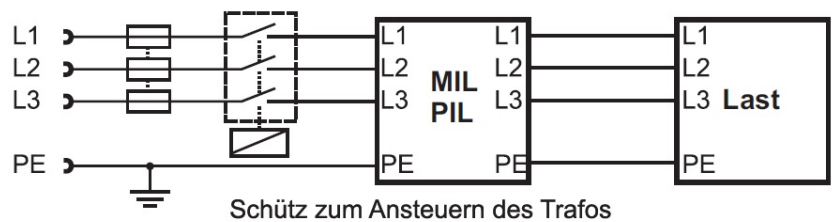


Without neutral conductor

PIL25-15-G-oN | PIL25-15-M-oN
 PIL32-35-G-oN | PIL32-35-M-oN
 PIL63-M-oN | PIL-63G-oN
 PIL90-M-oN | PIL90-G-oN
 PIL125-M-oN



3x400V AC/50 - 60 Hz



Please note: The individual connections are marked on the mounting plate and may differ from this view.

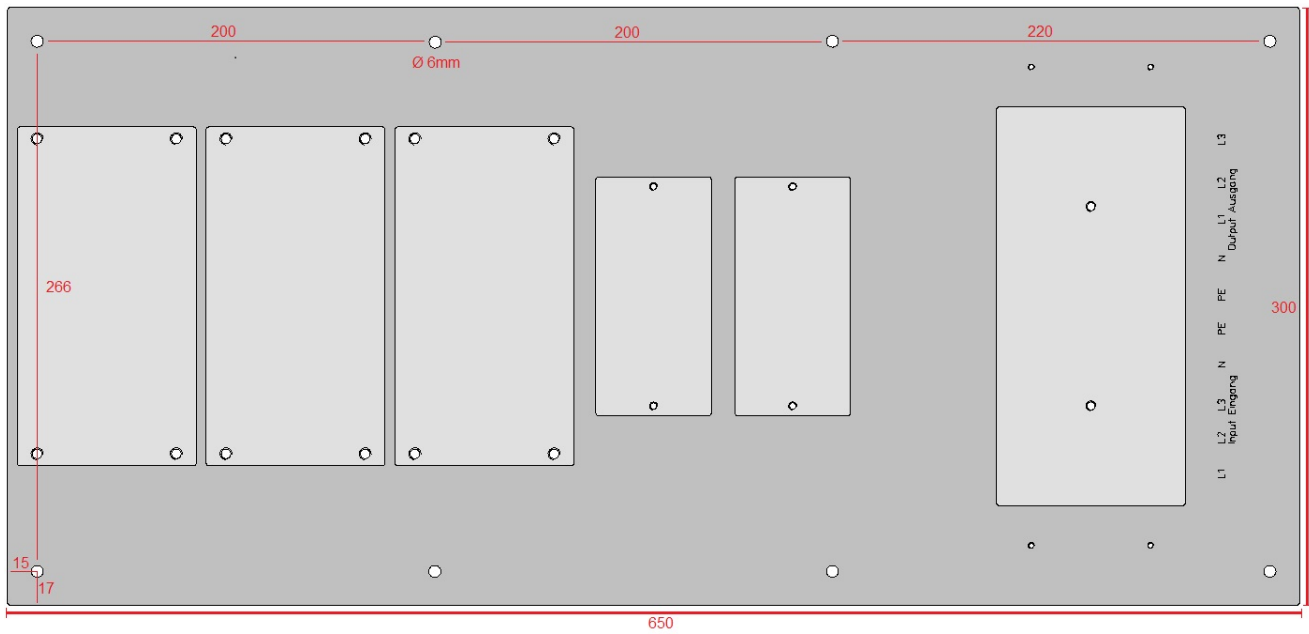
Please follow this connection diagram at the mounting plate.



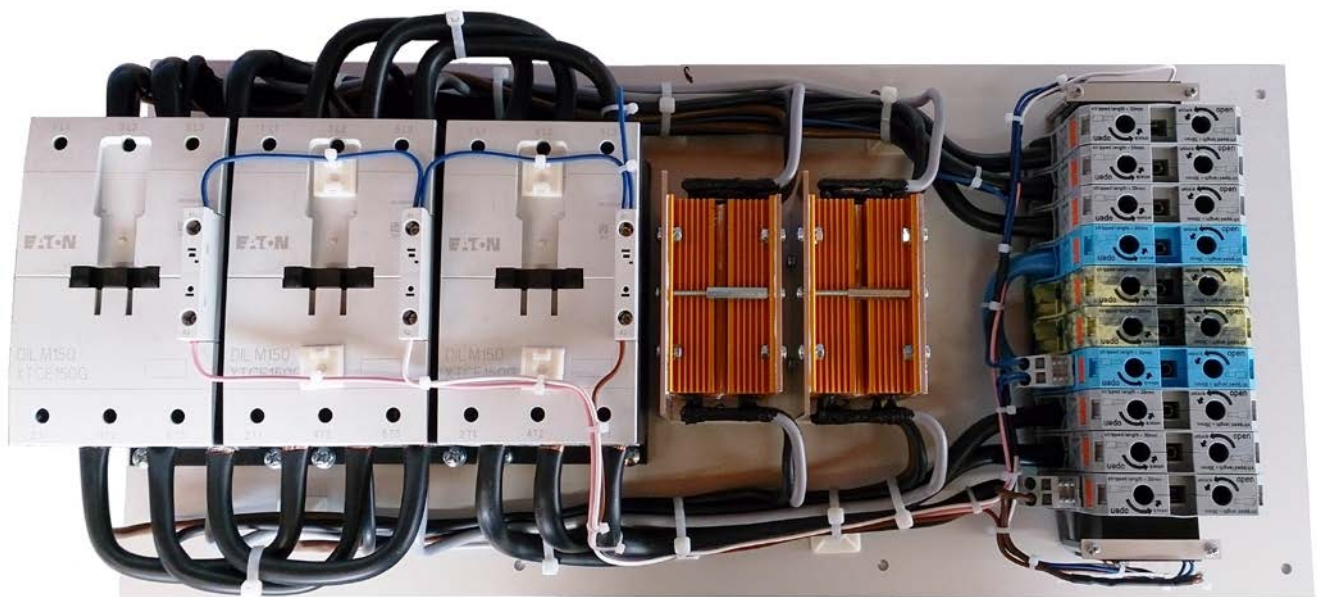
Model	PIL25	PIL32	PIL63	PIL90	PIL125
- Versions	<i>PIL25-15-M-N</i> <i>PIL25-15-M-oN</i> <i>PIL25-15-G-N</i> <i>PIL25-15-G-oN</i> <i>PIL25-15-M-N-1PH</i>	<i>PIL32-35-M-N</i> <i>PIL32-35-M-oN</i> <i>PIL32-35-G-N</i> <i>PIL32-35-G-oN</i>	<i>PIL63-M-N</i> <i>PIL63-M-oN</i> <i>PIL63-G-N</i> <i>PIL63-G-oN</i> <i>PIL63-M-N-1PH</i> <i>PIL63-M-oN-1PH</i>	<i>PIL90-M-N</i> <i>PIL90-M-oN</i> <i>PIL90-G-N</i> <i>PIL90-G-oN</i>	<i>PIL125-M-N</i> <i>PIL125-M-oN</i>
Operating Voltage	400VAC – 50/60Hz				
Max. Output Power	15kVA	20kVA	44kVA	62kVA	86kVA
Input delay	ca. 300ms				
Operating cycles	6 times / min.				
Storage temperature range	-40°C...85°C				
Operating temperature range	-35°C...70°C				
Cooling system	convection cooling				
Connection terminal	4 mm ²	6 mm ²	16 mm ²	35 mm ²	50 mm ²
Dimensions					
- Mounting plate Length x width x height (mm)	240x165x155 Length x width x height (mm)	240x165x155 Length x width x height (mm)	250x250x110 Length x width x height (mm)	430x250x200 Length x width x height (mm)	650x300x200 Length x width x height (mm)
- Chassis Length x width x height (mm)	250x180x170 Length x width x height (mm)	250x180x170 Length x width x height (mm)	250x180x170 Length x width x height (mm)	450x300x210 Length x width x height (mm)	Please request dimensions
Standards					
Protection class	I				
RF suppression level	Klasse B EN55022				
Safety regulations	EN60950, EN61000-3.2				
Customs tariff number	85044090				

All specifications are subject to change without prior notice. Please visit our homepage for the most up to date specifications.

PIL125-M-N



thickness 4mm, total height ca. 190mm



If you have any questions, suggestions or criticism please contact us (mailto@beteso.com).



You didn't find the product you are looking for you are interested in a new development? Then do not hesitate to call us ([+49 7121 / 9770-0](tel:+49712197700))

Please notice:

The article may slightly differ from this view, depending on the equipment variant or customer adaptations.

However, the individual operating elements are generally arranged in the same way.

Technical amendments, misprints and errors are reserved